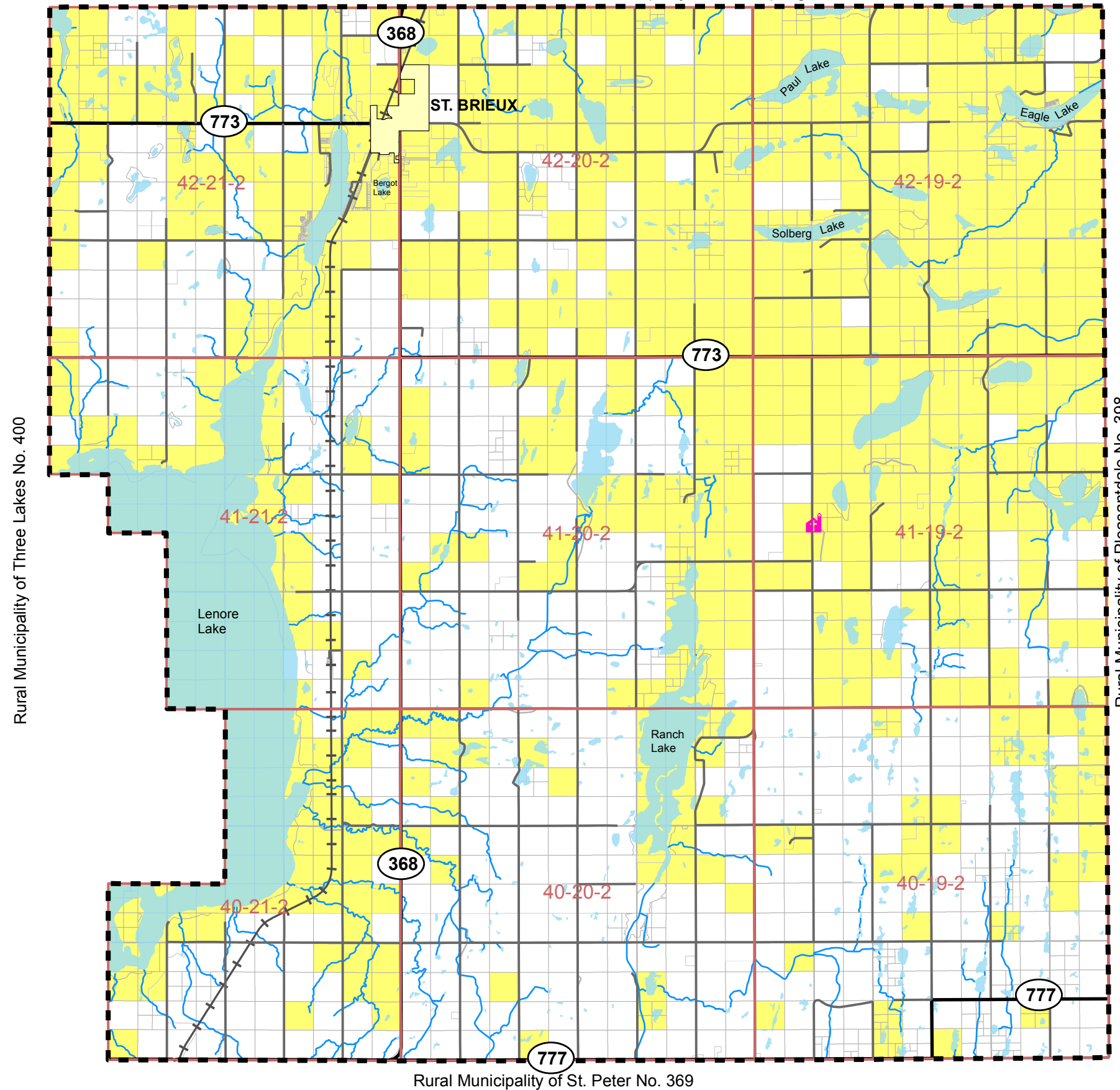


DRAFT Reference Map Rural Municipality of Lake Lenore No. 399 Heritage Sensitivity Lands

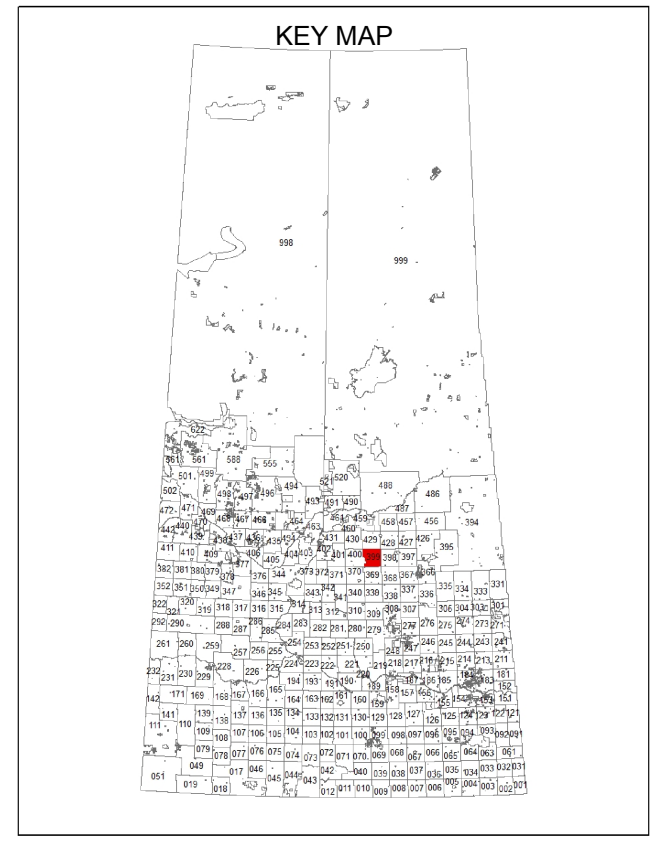
Rural Municipality of Flett's Spring No. 429



Rural Municipality of Three Lakes No. 400

Rural Municipality of Pleasantdale No. 398

Rural Municipality of St. Peter No. 369



Legend

- Heritage Sensitivity Lands
- Kermania Roman Catholic Church
- Boundary
- Major Highway
- Other Road
- Railway
- Watercourse
- Waterbody
- Urban Municipality
- Township

Notes: "Heritage Sensitive Lands" data is from Information Services Corporation. It is a product of the Heritage Conservation Branch (HCB) of Saskatchewan Ministry of Parks, Culture, and Sport. "Heritage Sensitive" means HCB has determined there is potential for undisturbed archaeological sites on these lands. This is based on the nature of the landscape, whether the land has existing archaeological sites, or whether the land has unbroken native prairie. "Heritage Sensitivity" does not necessarily mean archaeological sites are present; in most cases, it simply means a closer look is warranted. For more information, please visit HCB's website (www.pcs.gov.sk.ca/heritage) and click on "Developer's Online Screening Tool".

