

RURAL MUNICIPALITY OF LAKE LENORE NO. 399

BYLAW NO. 7/2016

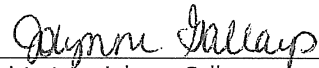
A BYLAW TO AMEND BYLAW NO. 4/2015 KNOWN AS THE ZONING BYLAW

The Council of the Rural Municipality of Lake Lenore No. 399 in the Province of Saskatchewan enacts to amend Bylaw No. 4/2015 as follows:

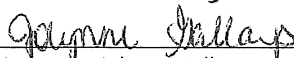
1. The Zoning District Map referred to in Section 6 is amended by rezoning from AR – Agricultural Resource District to CR – Country Residential Acreage District all lands shown within the bold dashed line on the attached plan of proposed subdivision dated July 21, 2016 and signed by Murray Radoux, S.L.S of Meridian Surveys Ltd., which forms part of this bylaw.
2. This bylaw shall come into force and take effect on approval by the Minister of Government Relations.



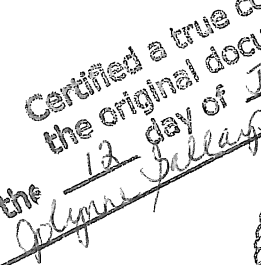

Reeve – Jean Kernalleguen


Administrator – Jolynne Gallays

Read a third time and adopted
this 11 day of January, 2017.


Administrator – Jolynne Gallays



Certified a true copy of
the original document
On the 12 day of January, 2017
 Administrator



PLAN OF PROPOSED SUBDIVISION

OF PART OF

N.W. ¼ SEC.31-TWP.41-RGE.19-W.2Mer.

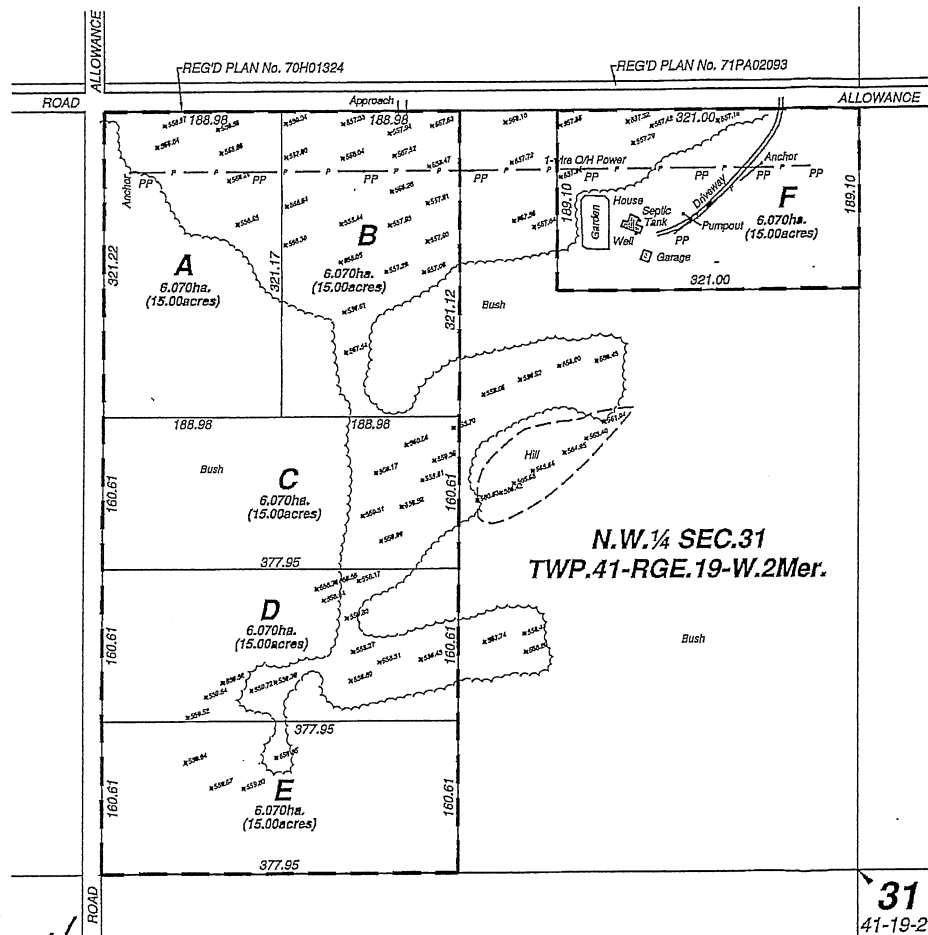
R.M. OF LAKE LENORE No. 399

2016

SCALE 1:5000

NOTE

PORTION TO BE SURVEYED IS OUTLINED IN A HEAVY DASHED LINE, AND CONTAINS 36.420ha.(90.00acres). MEASUREMENTS ARE IN METRES AND DECIMALS THEREOF. DISTANCES ARE APPROXIMATE AND MAY VARY BY ± 10 METRES. STANDARD ROAD ALLOWANCE SHOWN ARE 20.117m IN WIDTH. MERIDIAN SURVEYS LTD. MAKES NO GUARANTEE AS TO THE EXACT LOCATION OF THE UNDERGROUND FACILITIES SHOWN. THE LOCATION OF UNDERGROUND FACILITIES MUST BE VERIFIED BY THE OWNER OF SAID FACILITIES PRIOR TO ANY CONSTRUCTION ACTIVITY.



N.W. ¼ SEC.31
TWP.41-RGE.19-W.2Mer.

Ministry of Government Relations
Community Planning Branch
Approval

31
41-19-2

Murray & Radoux
Murray & Radoux
Saskatchewan Land Surveyor

July 21, 2016
DWG.FILE: M16090 (PPS)

Meridian
Surveys Ltd.