

RURAL MUNICIPALITY OF LAKE LENORE NO. 399

BYLAW NO. 6/2016

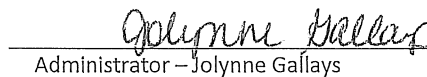
A BYLAW TO AMEND BYLAW NO. 3/2015 KNOWN AS THE OFFICIAL COMMUNITY PLAN

The Council of the Rural Municipality of Lake Lenore No. 399 in the Province of Saskatchewan enacts to amend Bylaw No. 3/2015 as follows:

1. Section 4.2 Implementation and Monitoring, subsection Comprehensive Development Proposals is amended by striking out "A Comprehensive Development Proposal shall be completed by the developer prior to presenting it to Council, on behalf of any person proposing to rezone, subdivide, or re-subdivide land for multi-parcel country residential, commercial or industrial purposes." and substituting "Where required by Council, the developer shall complete and present to Council a Comprehensive Development Proposal on behalf of any person proposing to rezone, subdivide, or re-subdivide land for multi-parcel country residential, commercial or industrial purposes."
2. The Future Land Use Map, Appendix "A" is amended by rezoning from AR – Agricultural Resource District to CR – Country Residential Acreage District all lands shown within the bold dashed line on the attached plan of proposed subdivision dated July 21, 2016 and signed by Murray Radoux, S.L.S of Meridian Surveys Ltd., which forms part of this bylaw.
3. This bylaw shall come into force and take effect on approval by the Minister of Government Relations.



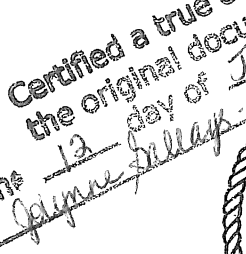

Reeve – Jean Kernaleguen


Administrator – Jolynne Gallays

Read a third time and adopted
this 11 day of January, 2017.


Administrator – Jolynne Gallays



Certified a true copy of
the original document
On the 12 day of January, 2017
 Administrator



PLAN OF PROPOSED SUBDIVISION

OF PART OF

N.W.¼ SEC.31-TWP.41-RGE.19-W.2Mer.

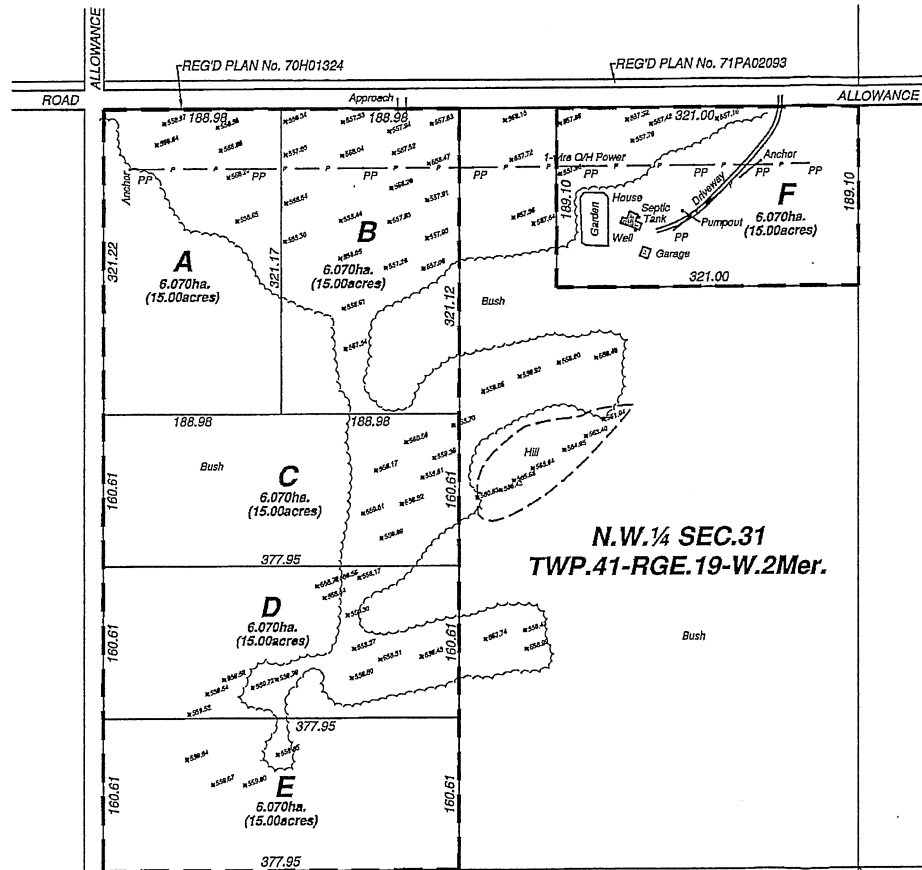
R.M. OF LAKE LENORE No. 399

2016

SCALE 1:5000

NOTE

PORTION TO BE SURVEYED IS OUTLINED IN A HEAVY DASHED LINE, AND CONTAINS 36.420ha (90.00acres)
 MEASUREMENTS ARE IN METRES AND DECIMALS THEREOF.
 DISTANCES ARE APPROXIMATE AND MAY VARY BY ± 10 METRES.
 STANDARD ROAD ALLOWANCE SHOWN ARE 20.117m IN WIDTH.
 MERIDIAN SURVEYS LTD. MAKES NO GUARANTEE AS TO THE EXACT LOCATION OF THE UNDERGROUND FACILITIES SHOWN. THE LOCATION OF UNDERGROUND FACILITIES MUST BE VERIFIED BY THE OWNER OF SAID FACILITIES PRIOR TO ANY CONSTRUCTION ACTIVITY.



**N.W.¼ SEC.31
TWP.41-RGE.19-W.2Mer.**

Ministry of Government Relations
 Community Planning Branch
 Approval

31
41-19-2

Murray A. Radoux
 Murray A. Radoux
 Saskatchewan Land Surveyor

July 21, 2016
 DWG.FILE: M16090(PPS)
Meridian
 Surveys Ltd.