

RURAL MUNICIPALITY OF LAKE LENORE NO. 399

BYLAW NO. 14/2020

A BYLAW TO MANAGE THE WEIGHTS AND SPEEDS OF MOTOR VEHICLES

The Council of the Rural Municipality of Lake Lenore No. 399 in the Province of Saskatchewan enacts as follows:

**PART I – PURPOSE AND DEFINITIONS**

**Purpose**

1. The purpose of this bylaw is to establish a vehicle weight management system to regulate the weight and speed of vehicles, or vehicles with their loads, using designated routes within the municipality.

**Definitions**

2. Except as hereinafter provided, words used in this bylaw shall have the meanings ascribed to them in *The Vehicle Weight and Dimension Regulations, 2010*.
3. In this bylaw:
  - a. “**Administrator**” means the administrator of the municipality;
  - b. “**Minister**” means the member of the Executive Council to whom for the time being the administration of *The Highways and Transportation Act, 1997*, is assigned;
  - c. “**Municipality**” means the Rural Municipality of Lake Lenore No. 399;
  - d. “**Official Sign**” means a sign erected by or at the direction of the Municipality on or along a municipal highway; and
  - e. “**Speed Zone**” means the area between an official sign identifying an area as a speed zone and the official sign indicating a greater rate of speed or the end of the speed zone.

**PART II – VEHICLE WEIGHTS**

**Weight Limits on Certain Roads**

4. No person shall operate or cause to be operated or moved on or over any municipal highway, other than Grid 777, Grid 773, and the Haul Roads indicated on the map, Appendix “A”, attached to this bylaw, any vehicle, the gross vehicle weight of which exceeds 4 tonnes (8,800 pounds).
5. Grid 777 is described as follows:
  - a. N-N ½ – 1,2,3, – 40 – 19 – W2
  - b. E-E ½ – 4 – 40 – 19 – W2
  - c. N-N ½ – 33,32,31, – 39 – 19 – W2
  - d. N-N ½ – 36,35,34,33,32,31 – 39 – 20 – W2
  - e. N-N ½ – 32 – 39 – 21 – W2
6. Grid 773 is described as follows:
  - a. N-N ½ – 36,35,34,33,32,31 – 41 – 19 – W2
  - b. N-N ½ – 36,35,34,33,32,31 – 41 – 20 – W2
  - c. N NW – 24 – 42 – 21 – W2
  - d. N-N ½ – 23,22,21,20,19 – 42 – 21 – W2
7. The Haul Roads are described as follows:
  - a. E-E ½ – 5,8,17,20,29,32 – 42 – 19 – W2

I HEREBY CERTIFY THAT THIS IS A TRUE AND EXACT COPY OF THE ORIGINAL DOCUMENT.  
Certified by ODGM B (Admin/RM399)  
this 22 day of December, 2020

## Exemptions

8. The restrictions set out in section 4 of this bylaw shall not apply to the following:
  - a. Road construction and maintenance equipment moving on or over a public highway within the limits of the project on which they are being used;
  - b. Motor graders, pavement-stripping equipment, or snow removal equipment operated by or on behalf of
    - i. the ministry; or
    - ii. the municipality;
  - c. Farm equipment when it is operated or towed on or over a public highway; and
  - d. School buses.

## PART III – REGULATE SPEED

### Provisions

9. No person shall operate a vehicle at a greater speed than which is posted on any roadway in the municipality.
10. The maximum speed on all roadways within the municipality shall not exceed 80 km/hr excluding the following highways:
  - a. Grid 773, commencing at the boundary between the municipality and the Town of St. Brieux and ending 1 km west – Maximum Speed = 40 km/hr
  - b. West Side Subdivision (all streets: Boissiere Drive; FM Godart Way; Lake Front Drive; Lenore Lane) – Maximum Speed = 30 km/hr
  - c. Willow Point Resort Subdivision (all streets: Blue Sky Bay; Corbeil Drive; Csapo Drive; Poplar Street; Willow Point Way) – Maximum Speed = 30 km/hr
  - d. East Side Subdivision (all streets: Lake Road; Lake View Drive; Lake View Crescent; Lakeside Ave E; Lakeside Drive; Lakeside St S; Railway Avenue) – Maximum Speed = 40 km/hr
  - e. Eagle Lake Subdivision (Rge Rd 2191 commencing 1 km south of the intersection of Twp Rd 425 and ending at the intersection of Eagle Lake Road, Eagle Lake Road) – Maximum Speed = 30 km/hr
  - f. Twp Rd 425A (commencing at Hwy 368 and ending at Rge Rd 2211) – Maximum Speed = 60 km/hr
  - g. Abattoir Road (commencing at the boundary between the municipality and the Town of St. Brieux [Town street intersection = 3 Street South and 2 Avenue] and ending at the south end of the roadway) – Maximum Speed = 40 km/hr
  - h. Rge Rd 2210A (commencing at Grid 773 and ending at Rge Rd 2211) – Maximum Speed = 40 km/hr
11. No person shall operate any vehicle, or vehicle with its load, the gross vehicle weight of which exceeds 4 tonnes (4,000 kilograms), at a speed greater than:
  - a. 60 kilometres per hour on any municipal road; OR
  - b. the maximum speed indicated by any official sign erected in a speed zone.

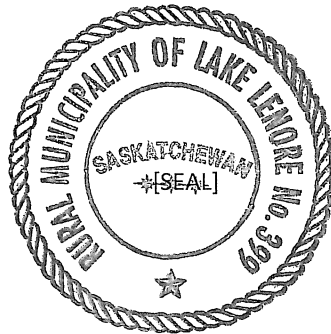
12. Signs indicating the maximum speed allowed shall be erected on all roads at the locations noted in Section 10, and shall be placed at the point of entry or commencement of the speed zone area.
13. No person shall deface, injure, destroy or remove any speed sign or marker erected in according with the provisions of this Bylaw.

**PART IV – ENFORCEMENT**

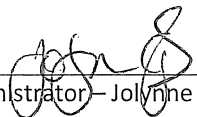
14. A person who contravenes any provision of this bylaw is guilty of an offence.
15. The penalty for breach of any provision of this bylaw shall be those set out in the General Penalty Bylaw of the municipality.

**PART V – COMING INTO FORCE**

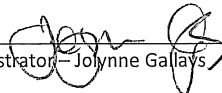
16. Bylaw No. 02/2020 is hereby repealed.
17. This bylaw shall come into effect upon the third reading.



  
Reeve – Jean Kernalleguen

  
Administrator – Jolynne Gallays

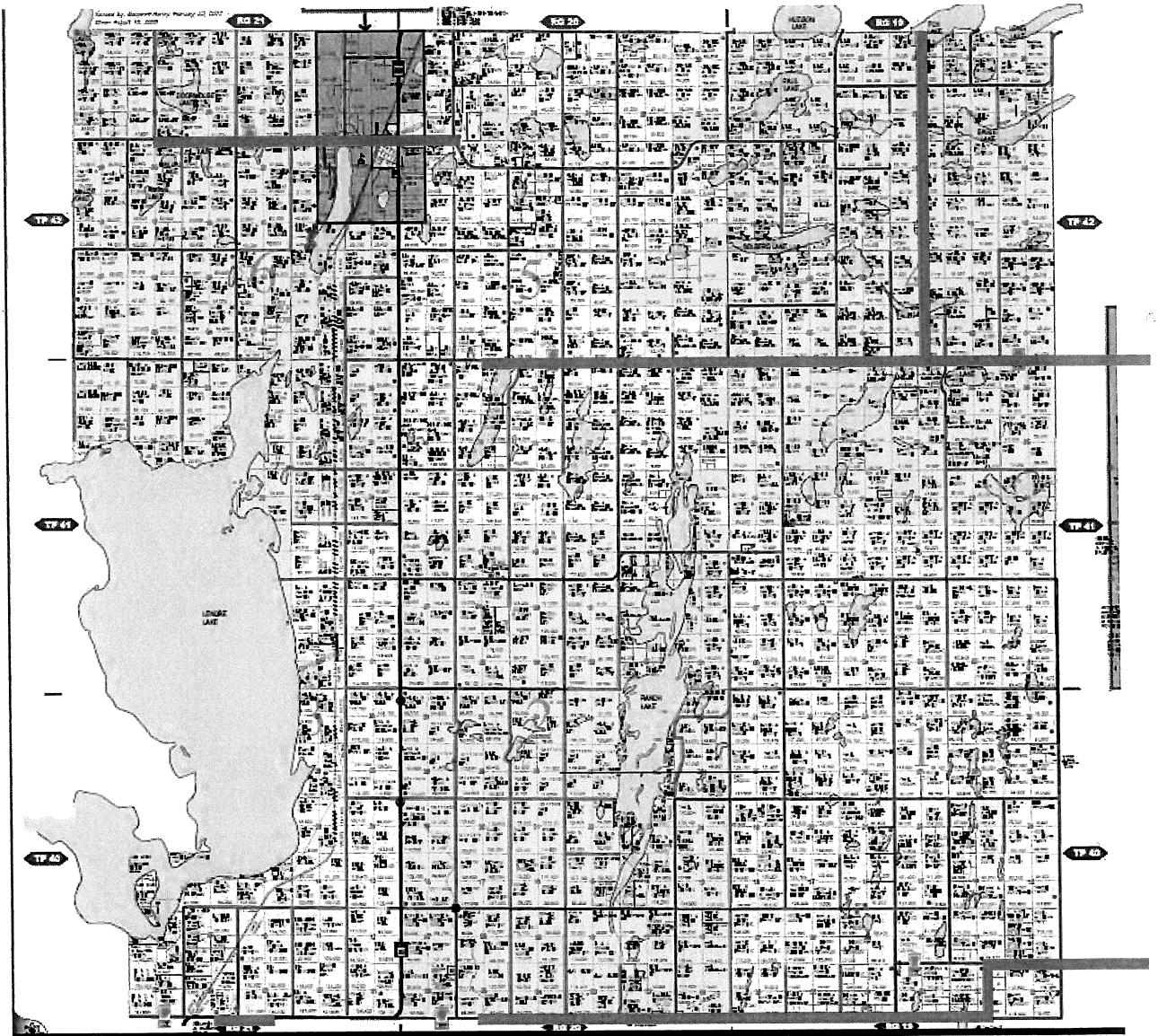
Read a third time and adopted  
this 21 day of December, 2020.

  
Administrator – Jolynne Gallays

RURAL MUNICIPALITY OF LAKE LENORE NO. 399

BYLAW NO. 14/2020

Appendix A



*designated haul roads*